



A BRAND OF

GHIRAROI

Italian stone contractor ®

HAMAD MEDICAL CENTER



HAMAD MEDICAL CENTER / DOHA, QATAR

As transformed from the Athletes Village for the Doha Asian Games 2006, this project is now one of the largest of healthcare centers of its kind in the Middle East. Set on a 63.5-hectare single city block in Doha, as a state-of-the-art medical facility it involves four hospitals – is centered on a 1,100-bed hospital, comprising pediatric, physical medicine and rehabilitation hospitals and a skilled nursing facility.

Location	Project Architects	Stone contractor	Materials
Hamad Medical Center Doha, Qatar	Fedcon (Federation of Design and Construction Services) Thailand	Team Ghirardi Brescia	Botticino Classico



A BRAND OF
GHIRARDI
Italian stone contractor





A BRAND OF
GHIRARDI
Italian stone contractor ®

THE PROJECT

In addition to the hospital buildings, the project also includes new residential accommodation for the hospital staff. These residential facilities will be provided with leisure and recreation amenities such as a nurses' club and a married staff club containing suites of guest rooms. A seven-storey office block for the Ministry of Public Health is also part of the project. It includes an open mall, a 300-seat auditorium, a 520-slot car-park and minister's suite.

The areas between the buildings are extensively landscaped to provide not only 'green cover' but also leisure and meeting areas, and plazas are laid out for both hospital visitors and staff.





A BRAND OF
GHIRARDI
Italian stone contractor ®





A BRAND OF
GHIRARDI
Italian stone contractor ®

MATERIALS

EXTERIOR CLADDING

The external wall cladding is made of Botticino Classico, brushed stone 30 mm thick. The siding and soffit panels have multiple dimensions depending on the façade conditions, and are all secured with an effective joint of 10 mm.





A BRAND OF
GHIRARDI
Italian stone contractor ®

THE VENTILATED SYSTEM PROVIDES THE FASTENING MECHANISM

Special components were pre-assembled in the workshop for the numerous window openings, with a mechanical system of dual stainless steel support, embedded in the upper and lower cavities, and of **epoxy adhered elements** and corresponding exposed edges with a brushed effect.



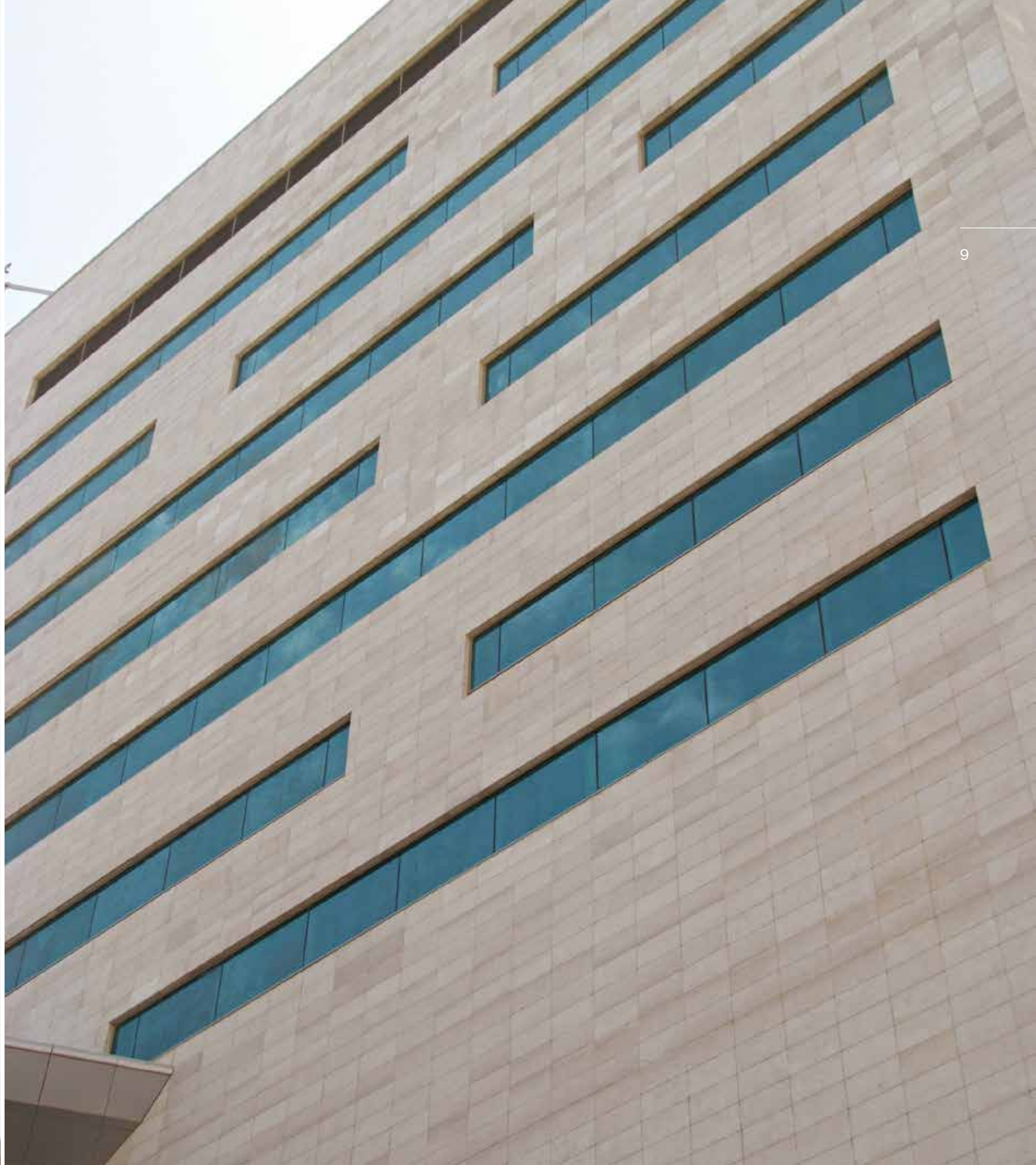


A BRAND OF
GHIRARDI
Italian stone contractor



G
1938

A BRAND OF
GHINARDI
Italian stone contractor





A BRAND OF
GHIRARDI
Italian stone contractor ®





A BRAND OF
GHIRARDI
Italian stone contractor ®





A BRAND OF
GHIRARDI
Italian stone contractor ®

CONSTRUCTION

The superstructure is generally reinforced concrete frame on pad foundation with post-tensioned concrete for the upper floors. The buildings are clad in Botticino Classico panels and the interior finishes are of the highest quality with an extensive use of natural stone and other quality materials. Double-glazed windows and curtain walling will be used on the project.





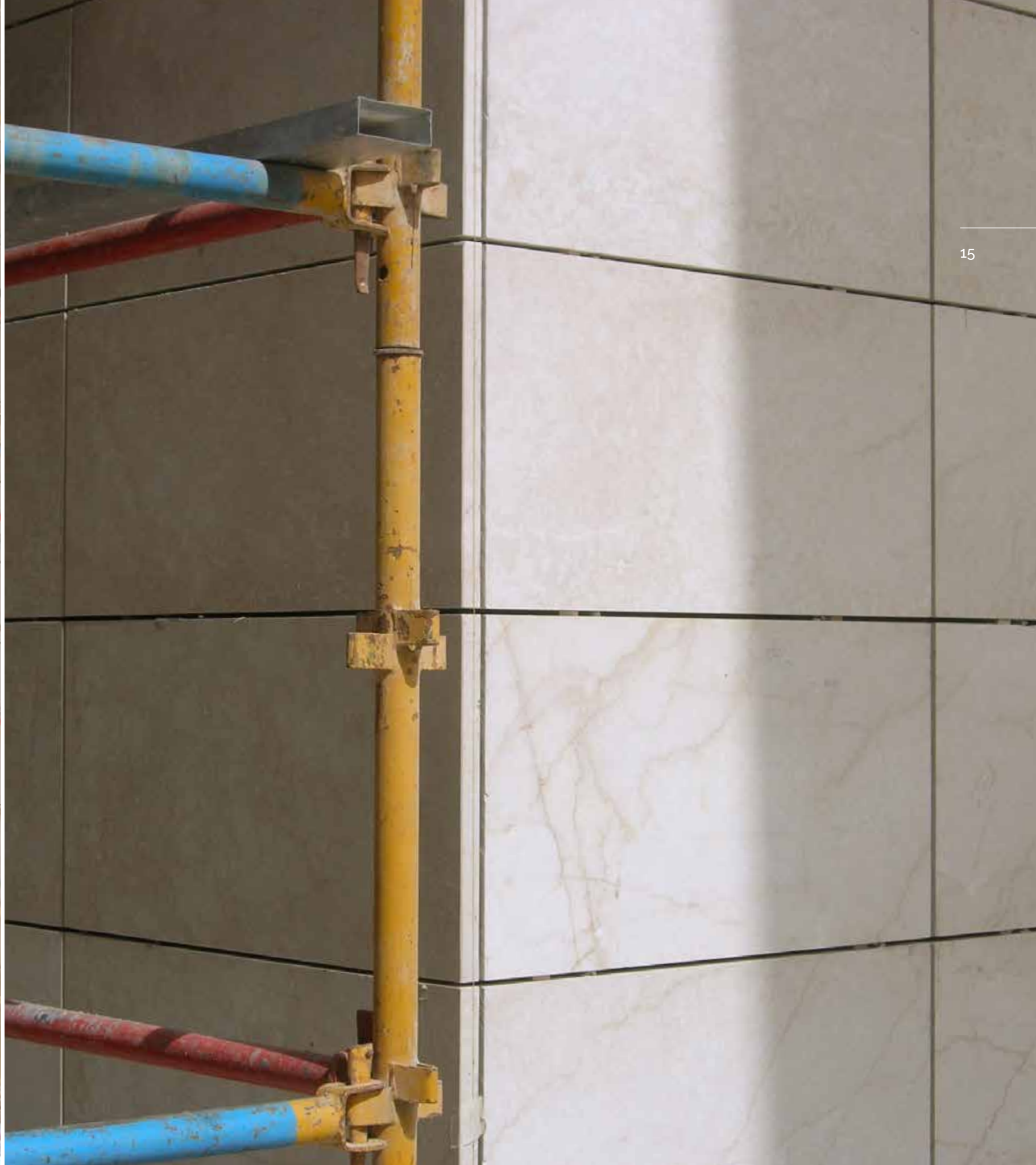
A BRAND OF
GHIRARDI
Italian stone contractor





G
1938

A BRAND OF
GHIRARDI
Italian stone contractor





A BRAND OF
GHIRARDI
Italian stone contractor ®





A BRAND OF
GHIRARDI
Italian stone contractor ®



A BRAND OF
GHIRARDI
Italian stone contractor ®





A BRAND OF
GHIRARDI
Italian stone contractor ®





A BRAND OF
GHIRARDI
Italian stone contractor ®



A BRAND OF
GHIRARDI
Italian stone contractor ®





A BRAND OF
GHIRARDI
Italian stone contractor ®





A BRAND OF
GHIRARDI
Italian stone contractor ®





GHIRARDI1938
ITALIAN STONE MAESTRO

A BRAND OF

GHIRARDI

Italian stone contractor ®

www.ghirardi.it